

**PEI CHUN PUBLIC SCHOOL**  
**PRIMARY 4**  
**TERM 2 WEIGHTED ASSESSMENT 2024**  
  
**SCIENCE**  
  
**Time: 30 min**

Name: \_\_\_\_\_ ( )

Class: Primary 4 / ( ) \_\_\_\_\_

Date: 15 May 2024

Science Teacher: \_\_\_\_\_

Parent's Signature: \_\_\_\_\_

<b>SECTION A</b>	<b>10</b>
<b>SECTION B</b>	<b>10</b>
<b>TOTAL</b>	<b>20</b>

**INSTRUCTIONS TO CANDIDATES**

1. Do not turn over this page until you are told to do so.
2. Follow all instructions carefully.
3. Answer all questions.
4. Write your answers in this booklet.

---

This booklet consists of 8 printed pages including the cover page.

**Section A (5 × 2 marks)**

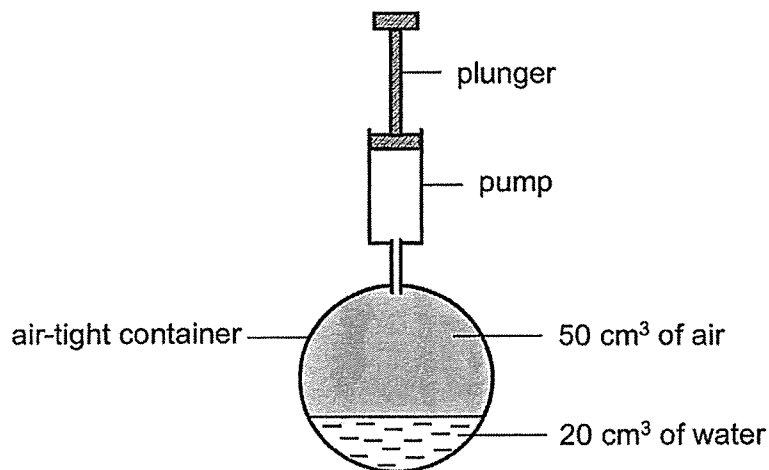
For questions 1 to 5, choose the most suitable answer and write its number (1, 2, 3 or 4) in the brackets provided.

1 Which of the following is **not** matter?

- (1) air
- (2) glue
- (3) paper
- (4) shadow

( )

2 The container holds 20 cm<sup>3</sup> of water and 50 cm<sup>3</sup> of air.



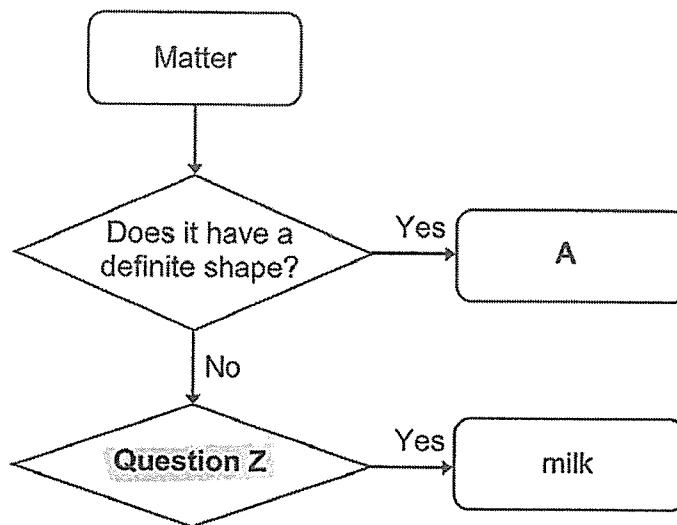
When the plunger was pushed in completely, 10 cm<sup>3</sup> of air was forced into the container.

What would be the final volume of the air in the container?

- (1) 10 cm<sup>3</sup>
- (2) 50 cm<sup>3</sup>
- (3) 60 cm<sup>3</sup>
- (4) 80 cm<sup>3</sup>

( )

3 Study the flow chart shown below.



What could A and question Z be?

	A	Question Z
(1)	coin	Does it have definite volume?
(2)	air	Does it have definite volume?
(3)	coin	Can it be compressed?
(4)	air	Can it be compressed?

( )

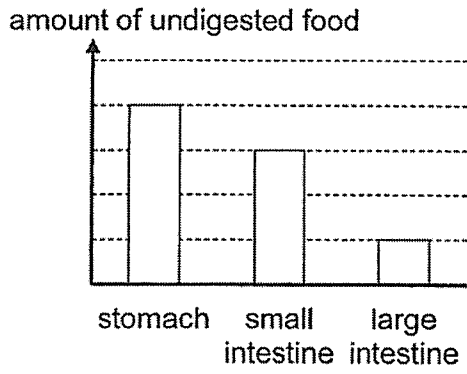
4 In which of the following parts of the human digestive system is digested food absorbed into the blood?

- (1) mouth
- (2) stomach
- (3) small intestine
- (4) large intestine

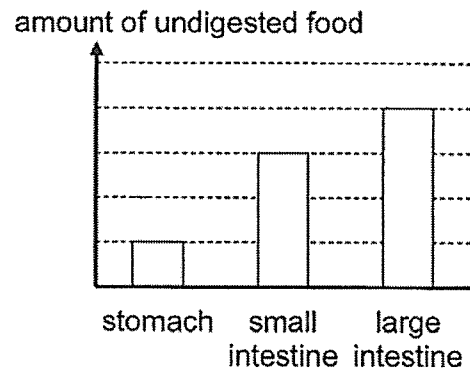
( )

5 Which of the following graphs correctly shows the amount of undigested food leaving some of the organs in the digestive system after a meal?

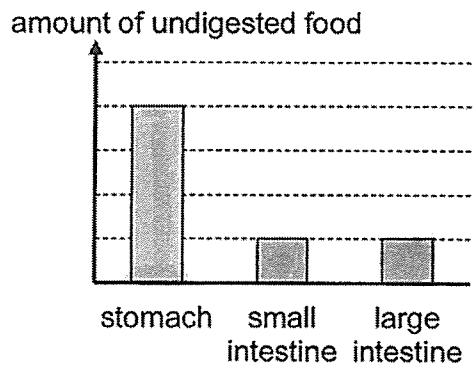
(1)



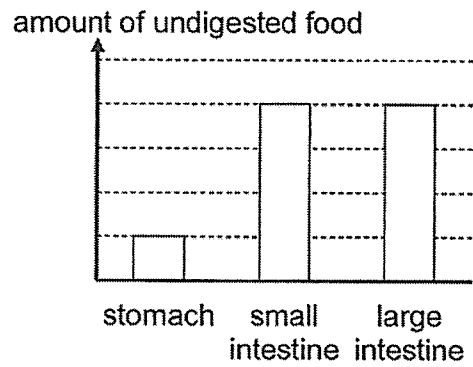
(2)



(3)



(4)



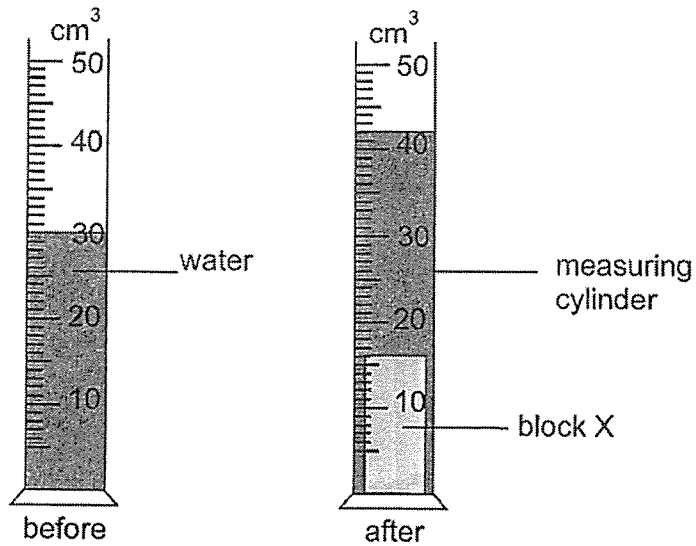
( )

End of Section A

**Section B (10 marks)**

For questions 6 to 9, write your answers in the spaces provided.

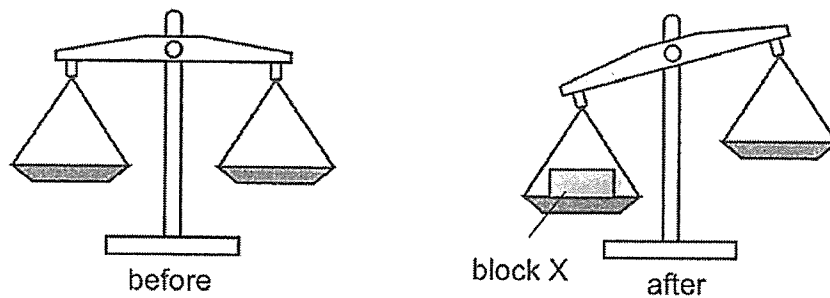
6 Siti placed block X into a measuring cylinder with some water as shown below.



(a) What was the volume of the metal block? [1]

\_\_\_\_\_ cm<sup>3</sup>

(b) Siti conducted an experiment by placing block X on a balance. The diagram below shows what she observed.



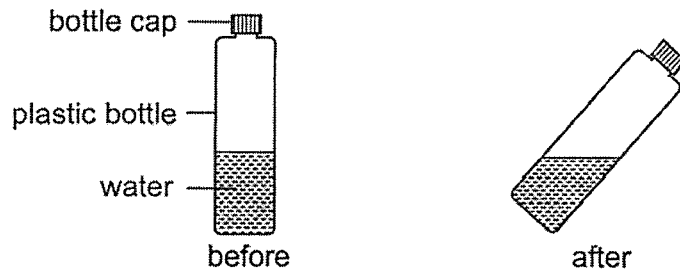
Which property of matter was shown in this experiment? [1]

---

---

SCORE	
-------	--

- 7 Andy filled a plastic bottle with some water. The diagram below shows what he observed when he tilted the bottle.



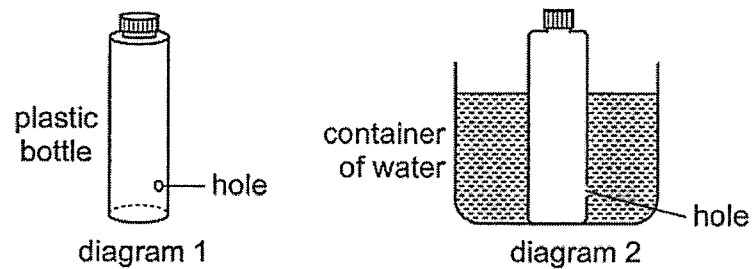
- (a) Explain his observation using a property of liquid. [1]

---



---

- (b) Andy emptied the bottle and poked a hole on it as shown in diagram 1. He placed the bottle into a container of water as shown in diagram 2.



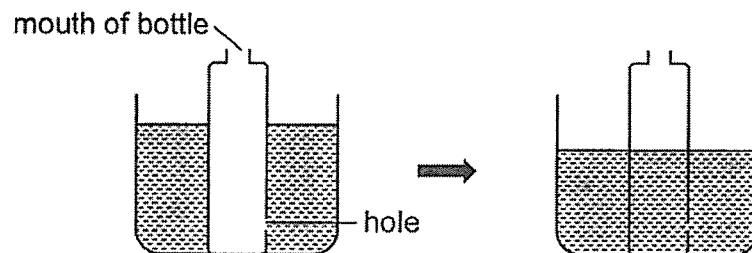
- (i) Andy observed that the water in the container could not enter the bottle through the hole. Explain his observation [1]

---



---

- (ii) Andy removed the bottle cap as shown below.



- Explain why water was able to enter the bottle when the bottle cap was removed. [1]

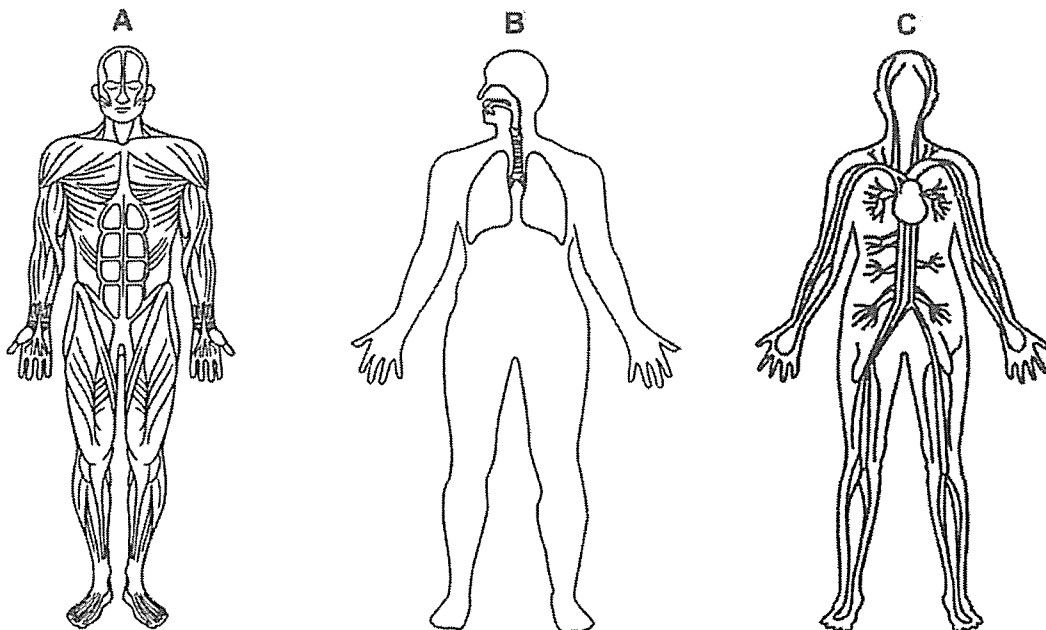
---



---

SCORE	
-------	--

8 Each diagram below represents a body system.



(a) Which system, A, B, or C, represents the respiratory system? [1]

System \_\_\_\_\_

(b) One of the body systems carries oxygen, digested food and water to different parts of the body.

(i) Which system, A, B, or C, represents this system? [1]

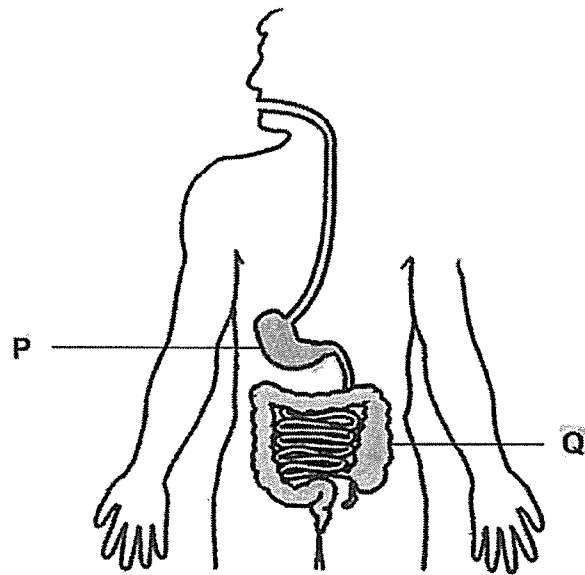
System \_\_\_\_\_

(ii) Name this system. [1]

\_\_\_\_\_ system

SCORE	
-------	--

9 The diagram below shows the human digestive system.



(a) Name organ P. [1]

\_\_\_\_\_

(b) State the function of organ Q. [1]

\_\_\_\_\_  
\_\_\_\_\_

End of Section B

SCORE	
-------	--



**Pei Chu Public School**  
**Primary 4 Science**  
**Term 2 Weighted Assessment 2024**

**Section A**

Qn.	Ans.
1	4
2	2
3	1
4	3
5	3

**Section B**

6a)	<p><i>Skill: Measuring volume of solid using measuring cylinder and water</i></p> <p>12 cm<sup>3</sup>      (42 cm<sup>3</sup> - 30 cm<sup>3</sup> = 12 cm<sup>3</sup>)</p>
b)	<p><i>Concept: A balance is used to compare the masses of two objects.</i></p> <p>Matter has mass.</p>
7a)	<p><i>Concept: Liquid has no definite shape.</i></p> <p><i>Observation: The shape of the water in the bottle changed.</i></p> <p>The water <u>has no definite shape</u> as it takes the shape of the bottle.</p>
b)	<p><i>Concept: Matter occupies space.</i></p> <p><i>Observation: Water could not enter the bottle through the hole.</i></p> <p>There was <u>air occupying the space in the bottle</u>. The air was trapped and it prevented water from entering the bottle, through the hole, to occupy the space.</p>
c)	<p><i>Concept: Matter occupies space.</i></p> <p><i>Observation: Water could enter the bottle through the hole when the cap was removed.</i></p> <p>Some of the <u>air in the bottle could escape through the mouth of the bottle</u>. Water would be able to enter through the hole and occupy the space that was previously occupied by the air.</p>

8a)	System B is the respiratory system
b)	i) System C ii) Circulatory system
9a)	Stomach
b)	<u>Water is absorbed from the undigested food</u> into the blood.