



Nan Hua Primary School
Primary 4 Science
Term 1 Weighted Assessment 2024

Marks	
Section A:	/10
Section B:	/10
Total:	/20

Name: _____ ()

Class: Primary 4S _____

Date: _____

Duration: 30 minutes



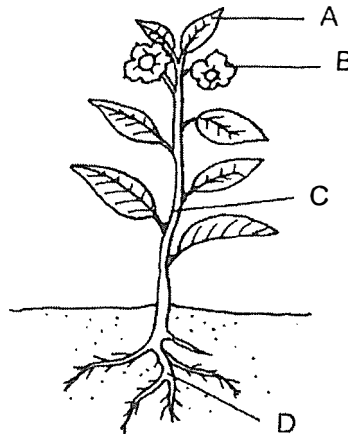
Parent's Signature

Answer all questions.

Section A: (5 x 2 marks = 10 marks)

For each question from 1 to 5, four options are given. One of them is the correct answer. Make your choice (1, 2, 3 or 4) and write your answer in the brackets provided.

1 The diagram shows a plant.



Which part, A, B, C or D, helps to transport water to all parts of the plant?

- (1) A
- (2) B
- (3) C
- (4) D

()

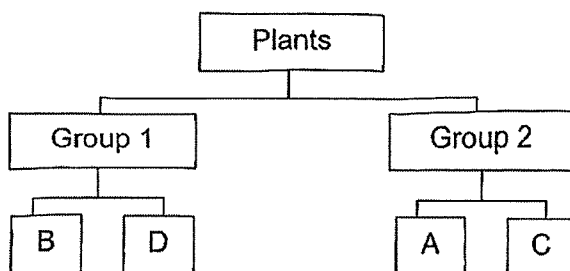
(Go on to the next page)

This booklet consists of 9 printed pages.

2 The table below shows the characteristics of four plants, A, B, C and D.

	Plants			
Characteristics	A	B	C	D
Texture of leaves	waxy	smooth	hairy	smooth
Type of leaf edge	straight	jagged	straight	jagged
Vein pattern of leaves	parallel	parallel	net	net
Shape of leaves	oval	oval	round	oval

Based on the table above, Sharinah classified the four plants as shown below.

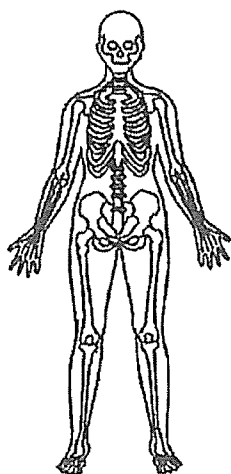


Which of the following characteristics was used to classify the plants?

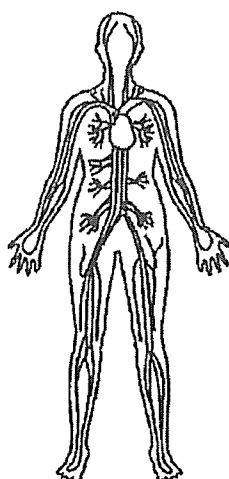
- (1) texture of leaves
- (2) type of leaf edge
- (3) shape of leaves
- (4) vein pattern of leaves

()

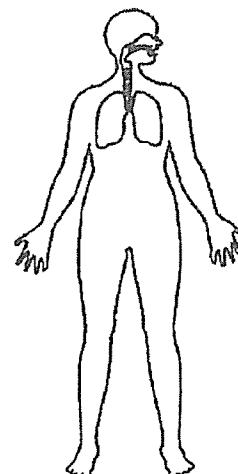
3 Look at the diagrams below.



A



B



C

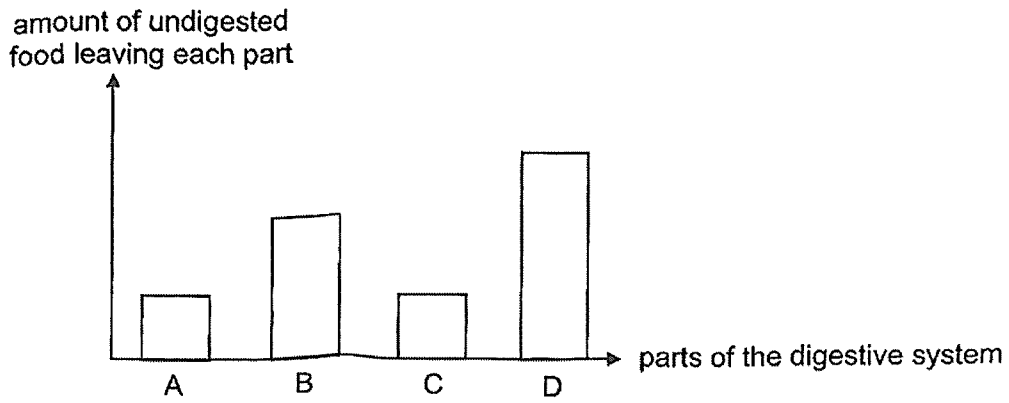
Which human system does A, B and C represent?

	A	B	C
(1)	skeletal system	muscular system	circulatory system
(2)	skeletal system	circulatory system	respiratory system
(3)	circulatory system	muscular system	respiratory system
(4)	respiratory system	skeletal system	circulatory system

()

(Go on to the next page)

- 4 A, B, C and D are parts of the digestive system. The graph below shows the amount of undigested food leaving each part after a meal.



Which of the following is correct?

	A	B	C	D
(1)	large intestine	stomach	small intestine	mouth
(2)	stomach	small intestine	mouth	large intestine
(3)	small intestine	large intestine	stomach	mouth
(4)	mouth	stomach	small intestine	large intestine

()

5 Which of the following statements about the body systems are not correct?

Statements	
A	The respiratory system transports food, water and gases to all parts of the body.
B	The circulatory system breaks down food and transports it to other parts of the body.
C	The muscular system works closely with the skeletal system to help the body to move.
D	The skeletal system gives the body its shape and protect the organs inside.

- (1) A and B only
- (2) C and D only
- (3) A, B and C only
- (4) B, C and D only

()

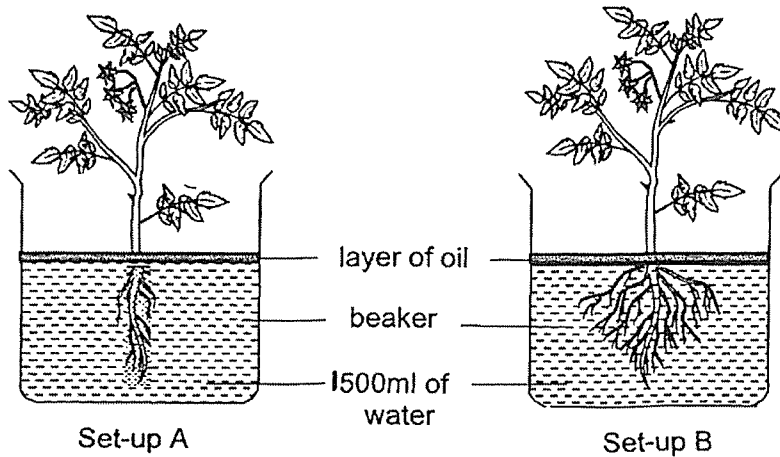
(Go on to the next page)

Total score for Section A	10
------------------------------	----

Section B: Structured questions (10m)

For questions 6 to 8, write your answers in the space provided. The number of marks available is shown in brackets [] at the end of each question or part question.

6 At the start of an experiment, Mary placed a plant in each of the set-ups, A and B.



Mary recorded the amount of water left in each set-up after a few days. The table below shows the results.

	Amount of water left in set-up A (ml)	Amount of water left in set-up B (ml)
Start	1500	15
End	100	5

(a) What is the aim of Mary's experiment? Put a tick in the correct box. [1]

Aim of the experiment		Tick (✓)
(i)	To find out if the layer of oil affects the water level in both set-ups.	
(ii)	To find out if the amount of roots affects the water level in both set-ups.	
(iii)	To find out if the amount of leaves affects the water level in both set-ups.	

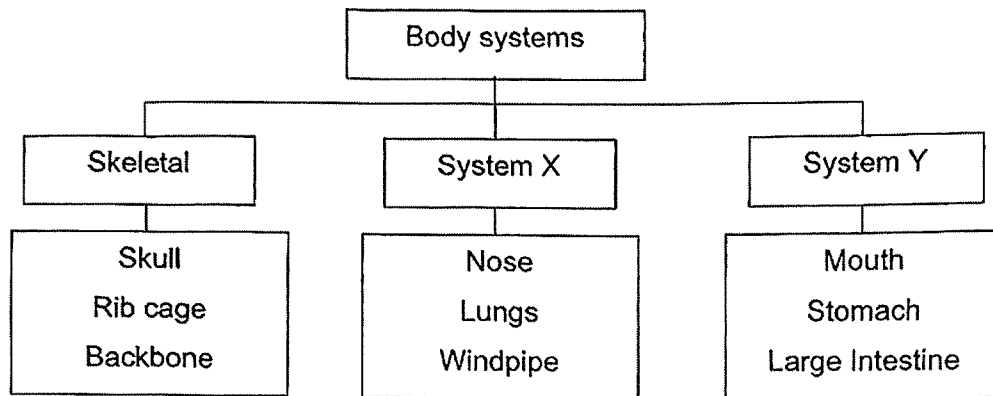
(b) With reference to page 6, what is the measured variable in Mary's experiment? [1]

(c) In which set-up, A or B, will the water level be lower after a few days?
Explain your answer. [2]

(Go on to the next page)

Score	4
-------	---

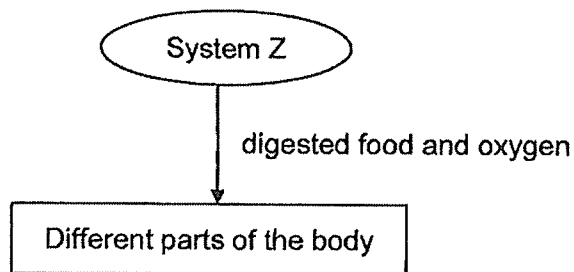
7 Study the classification chart below.



(a) Based on the classification chart above, identify the body part where water is absorbed from the undigested food. [1]

(b) What is the function of system X? [1]

The diagram below shows body system Z.
The arrow shows the movement of some substances in the body.

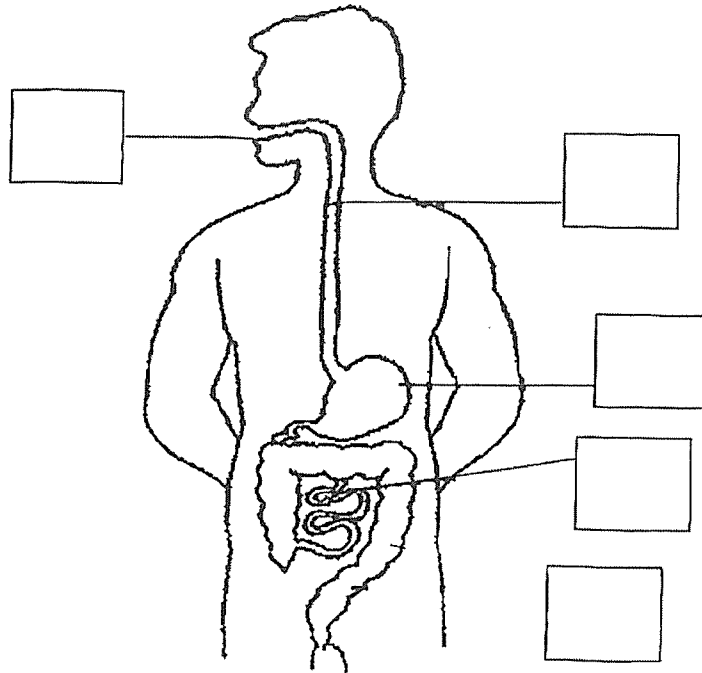


(c) What is system Z? [1]

Score	3
-------	---

8 The diagram below shows the human digestive system.

(a) In the diagram below, tick (✓) the boxes where digestive juices are produced. [1]



(b) Tom often eats his meals quickly. His mother advises him to chew his food well before swallowing. Explain how this will help in digestion. [2]

End of Paper

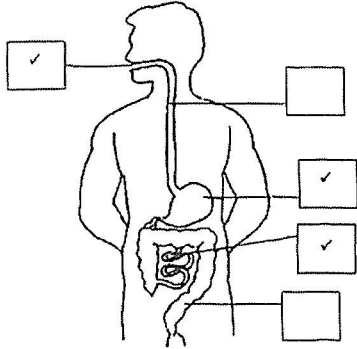
Score	3
-------	---

P4 Science
Term 1 WA 2024
ANSWER KEY

Section A: (5 x 2 = 10 marks)

Qn	Answer
1	3
2	2
3	2
4	1
5	1

Section B: (10 marks)

6a	[Tick] (ii) To find out if the amount of roots affects the water level in both set-ups.
6b	Amount of water left at the end of the experiment
6c	Set-up B The plant in set-up B has more roots than the plant in set-up A. Thus, the roots in set-up B absorb more water causing the water level to be lower in set-up B.
7a	large intestine
7b	Helps in the exchange of gases between our body and the surroundings
7c	circulatory
8a	
8b	When we chew well, food is broken down into smaller pieces and the smaller pieces allow more surfaces of the food to be in contact with digestive juices for faster digestion.

