

MAHA BODHI SCHOOL  
2023 WEIGHTED ASSESSMENT 2  
SCIENCE REVIEW  
PRIMARY FOUR

Name : \_\_\_\_\_ ( )

Date : 23 August 2023

Class : Primary 4 \_\_\_\_\_

Duration : 40 min

Marks: 

/ 30
------

Parent's signature : \_\_\_\_\_

**Section A : [8 x 2 marks = 16 marks]**

For each question from 1 to 8, four options are given. One of them is the correct answer. Make your choice (1, 2, 3 or 4). **Write your answer in the bracket.**

1. Which of the following is/are function(s) of the roots?

A: Helps to support the plant

B: Holds the plant firmly to the soil

C: Absorbs water and minerals from the soil

(1) A only

(2) B only

(3) A and C only

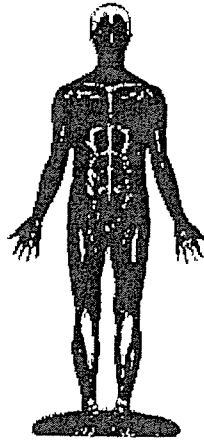
(4) B and C only

( )

Marks : 

/ 2
-----

2. Study the diagram of the muscular system.



What is the function of the muscular system?

- (1) Gives the body shape
- (2) Protects the organs in the body
- (3) Helps different parts of the body to move
- (4) Breaks down food into simple substances

( )

3. Which of the following are sources of light?

- A: sun
- B: moon
- C: star
- D: mirror

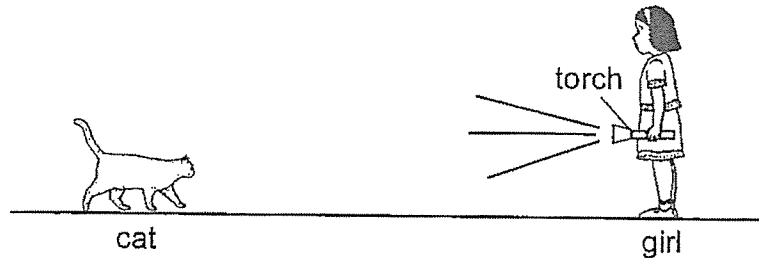
- (1) A and C only
- (2) B and D only
- (3) A, B and C only
- (4) A, B, C and D

( )

Marks :

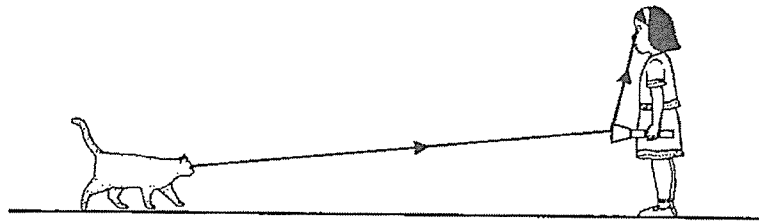
4

4. A girl could see a cat with a torch.

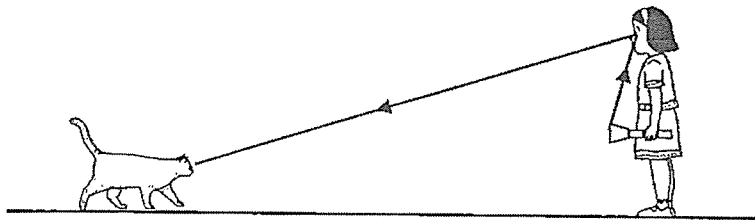


Which of the following shows correctly the path of light that makes it possible for the girl to see the cat?

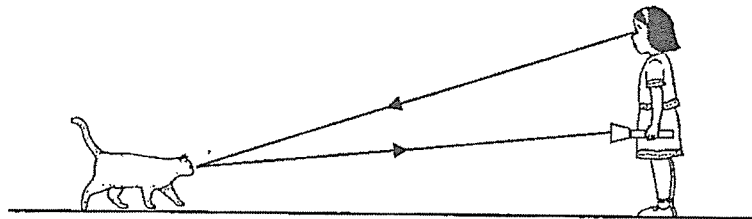
(1)



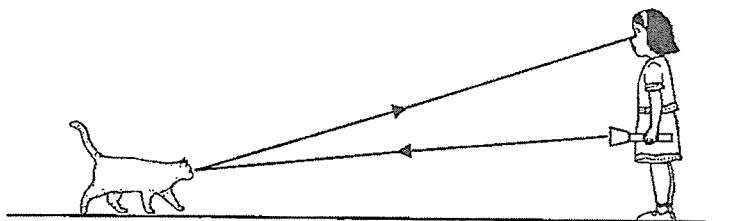
(2)



(3)



(4)



( )

Marks :

12

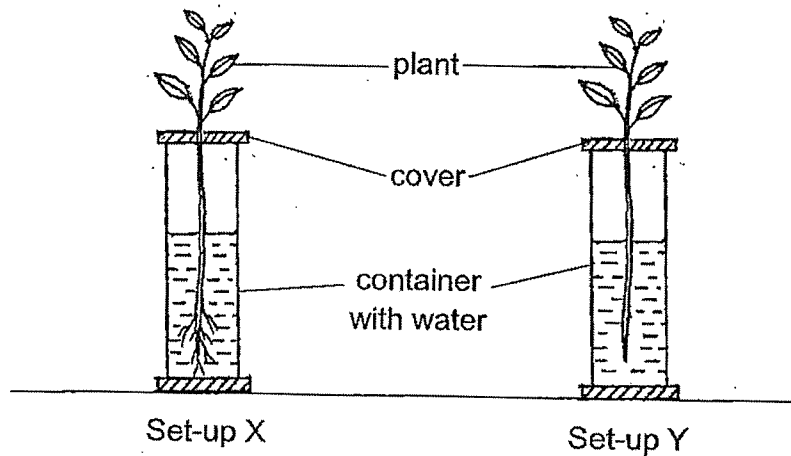
5. Benson wants to find out if more water causes a plant to grow taller.  
Which of the following should be kept the same for a fair experiment?

- A: type of plant
- B: place where the plants are kept
- C: amount of water given to each plant
- D: height of the plants at the start of the experiment

- (1) A and B only
- (2) C and D only
- (3) A, B and D only
- (4) B, C and D only

( )

6. Sarah had two similar plants. She removed all the roots of one plant and placed each of them in a container containing 300 ml of water as shown below.



Which one of the following shows the possible amount of water left for each set-up after four days?

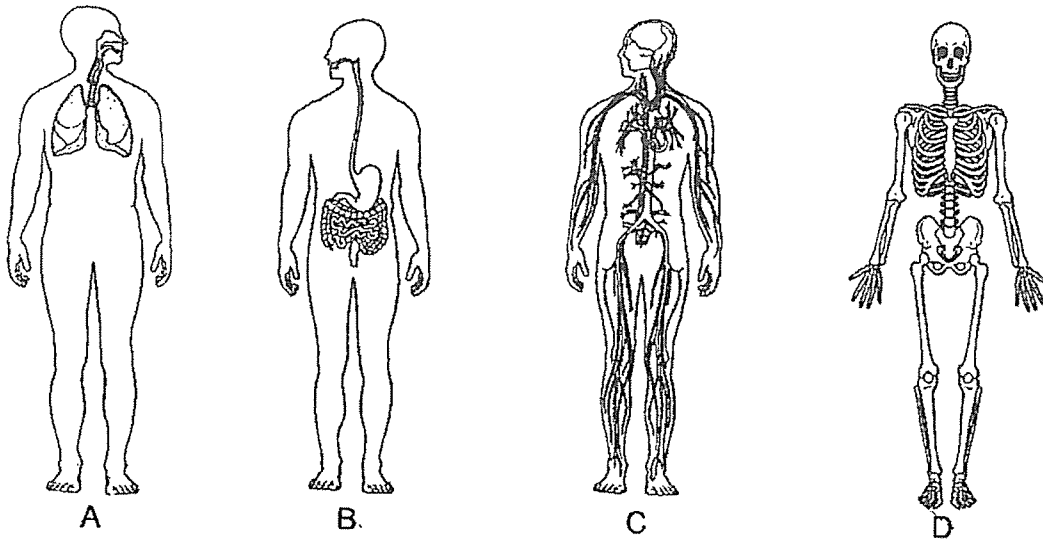
Amount of water left (ml)	
Set-up X	Set-up Y
(1) 300	230
(2) 230	290
(3) 230	230
(4) 330	300

( )

Marks :

/ 4

7. When we breathe, our body takes in oxygen from the air. This oxygen is then carried to the other parts of the body.

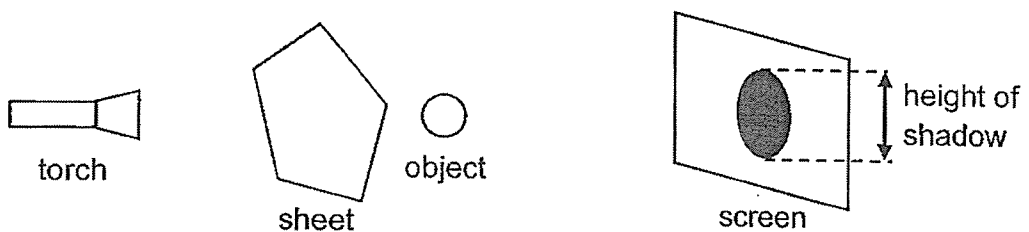


Which two human body systems work together to enable the body to perform these functions?

- (1) Systems A and B
- (2) Systems A and C
- (3) Systems B and D
- (4) Systems C and D

( )

8. The set-up below is used to obtain a shadow on the screen.



What change could be made so that the shadow becomes shorter?

- (1) move sheet towards the torch
- (2) move object towards the sheet
- (3) move torch away from the sheet
- (4) move screen away from the object

( )

Marks :

/ 4

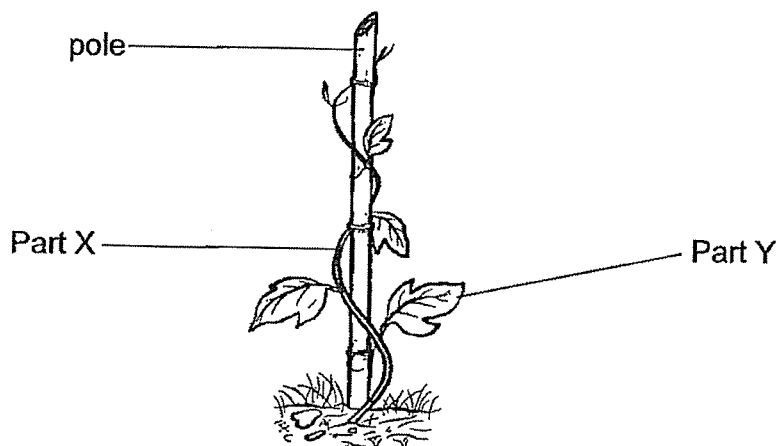
**SECTION B : [14 marks]**

For questions 9 to 12, write your answers in this booklet.

The number of marks available is shown in the brackets [ ] at the end of each question or part-question.

---

9. Study the diagram of the plant below.



(a) Identify parts X and Y. [2]

(i) X: \_\_\_\_\_

(ii) Y: \_\_\_\_\_

(b) State one function of part Y. [1]

---

---

(c) The pole provides support to the plant as it has a weak stem. Explain why the plant needs to grow upwards with the support. [1]

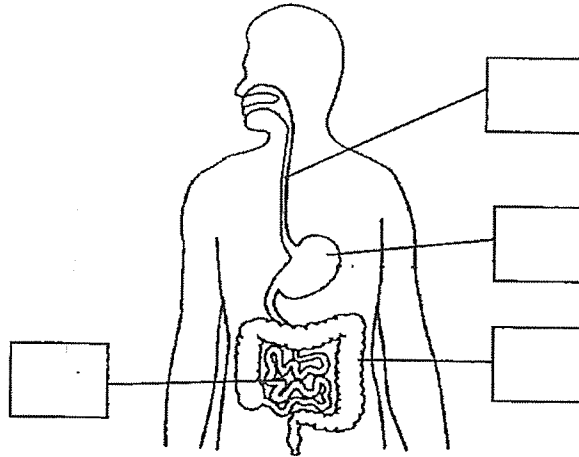
---

---

Marks:

/ 4

10. (a) The diagram below shows the digestive system.  
Tick (✓) the boxes in the diagram where digestion takes place. [1]



- (b) Where does digestion start? [1]

\_\_\_\_\_

- (c) Janet passes out watery waste several times. Which organ in the digestive system is not functioning properly? [1]

\_\_\_\_\_  
\_\_\_\_\_

- (d) State the function of the organ mentioned in (c). [1]

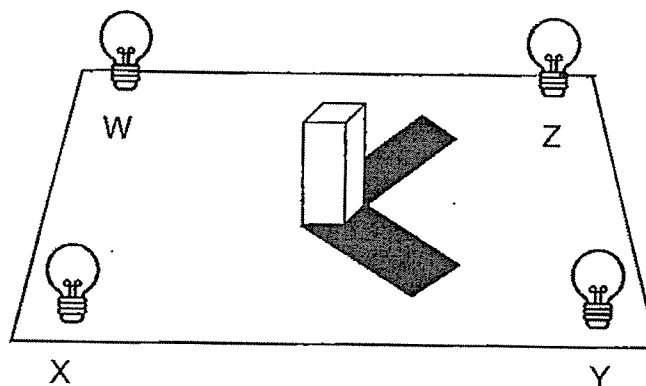
\_\_\_\_\_  
\_\_\_\_\_

Marks: 

--

 / 4

11. The diagram below shows an object placed at the centre of four light bulbs, W, X, Y and Z.



- (a) Which light bulbs, W, X, Y and/or Z were switched on to form the shadows shown in the diagram above? [1]

\_\_\_\_\_

- (b) State how a shadow is formed. [1]

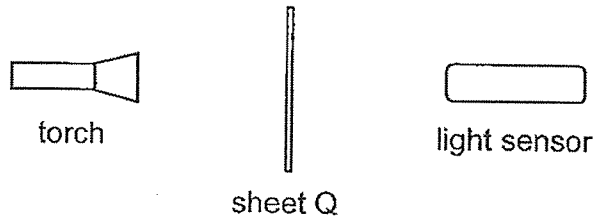
\_\_\_\_\_  
\_\_\_\_\_

Marks:

12



12. The set-up is used to measure the amount of light detected when different number of sheets Q are placed between a torch and a light sensor.



The results are shown in the table below.

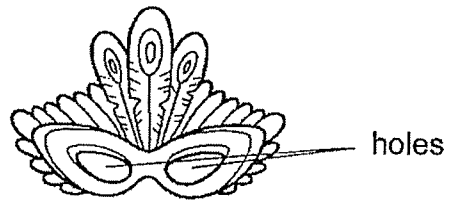
Number of sheet Q	Amount of light (units)
0	90
1	65
2	25
3	5
4	0

- (a) Based on the results, how did the amount of light change when the number of sheet Q increased from 1 to 3? [1]
- \_\_\_\_\_
- \_\_\_\_\_
- (b) Based on the information, what could be concluded about the property of sheet Q? [1]
- \_\_\_\_\_
- (c) Without adding or removing the equipment, state one improvement to the set-up such that a higher reading would be recorded when one sheet of Q is placed between the torch and the light sensor. [1]
- \_\_\_\_\_
- \_\_\_\_\_

Marks:

/ 3

- (d) The diagram below shows a party eye mask made of cardboard.



Using the same set-up, what is the amount of light (in units) detected when a hole of the mask is placed between the torch and the light sensor?

[1]

Marks:

	/ 1
--	-----

~ END OF PAPER ~

SCHOOL : MAHA BODHI PRIMARY SCHOOL

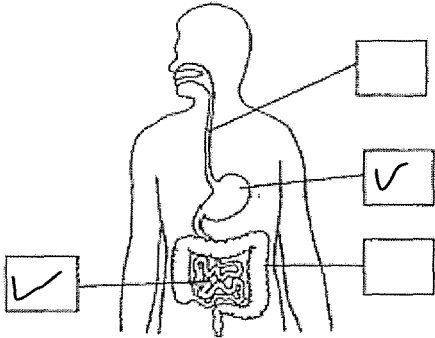
LEVEL : PRIMARY 4

SUBJECT : SCIENCE

TERM : WA2 2023

---

Q1	Q2	Q3	Q4	Q5	Q6	Q7	Q8
4	3	1	4	3	2	2	3

Q9)	a)i)stem ii)leaf b)Make food for the plant c)It holds the plant up so the leaves can get more sunlight to make food.
Q10)	a)  b)The mouth c)The large d)Absorb water from the undigested food.
Q11)	a) Light bulbs W and X. b) A shadow is formed when light is partially or completely blocked by an object.

Q12)	<p>a) The amount of light decreased when the number of sheet Q increased.</p> <p>b) Sheet Q allow some light to pass through.</p> <p>c) Move the light sensor closer to sheet Q.</p> <p>d) 90</p>
------	---