

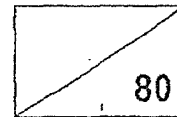


Rosyth School

Mathematics

Primary 3

Revision Paper 3



Name : \_\_\_\_\_

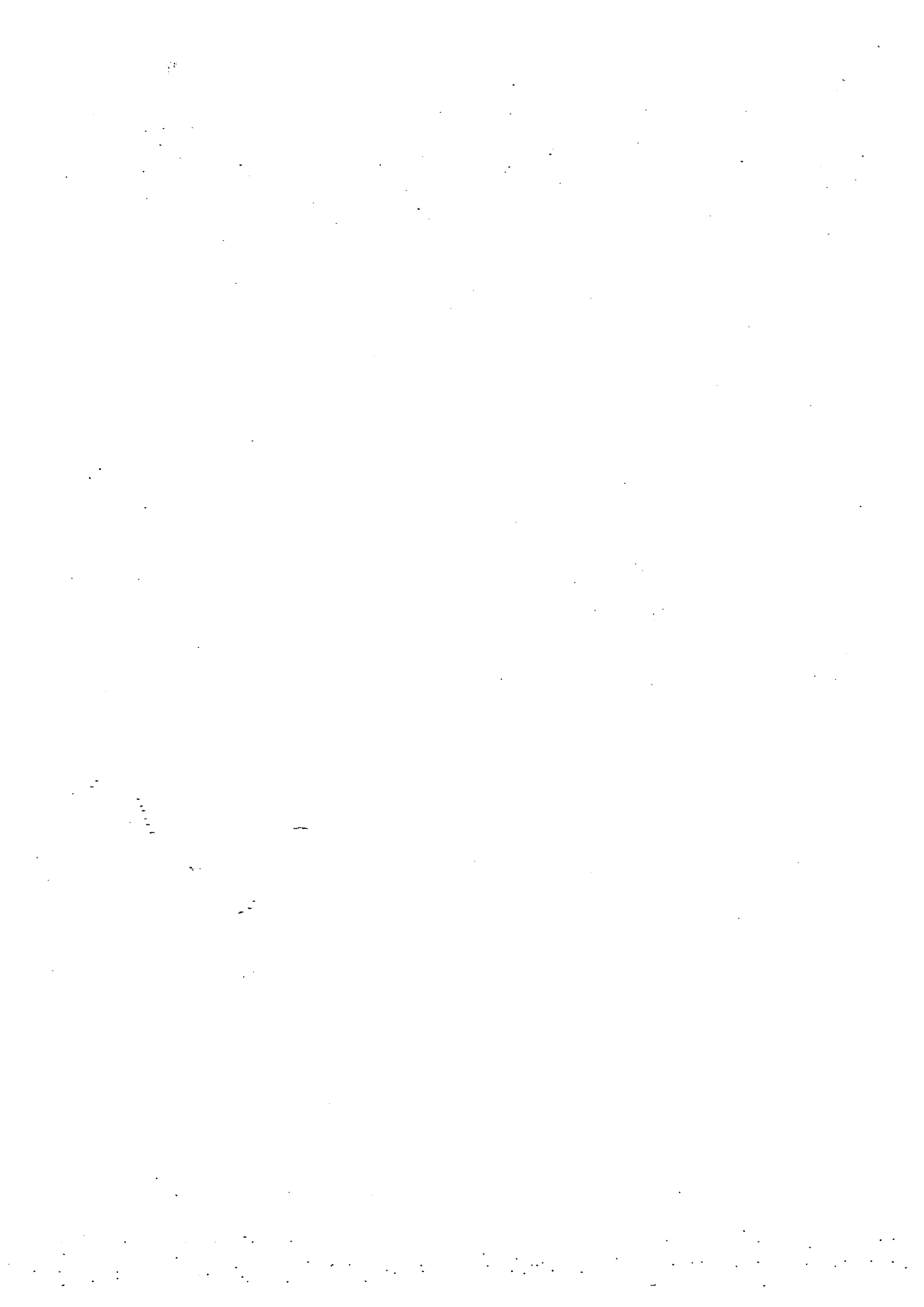
Class : Pr 3 - Register No. : \_\_\_\_\_ Duration : 1 h 45 min

Date : \_\_\_\_\_ Parent's Signature : \_\_\_\_\_

Instructions to Pupils:

1. Do not open this booklet until you are told to do so.
2. Follow all instructions carefully.
3. This paper consists of 3 parts – Sections A, B and C.
4. For questions 1 to 15 in Section A, shade the correct ovals on the Optical Answer Sheet (OAS).
5. ANSWER ALL THE QUESTIONS.

|           | Maximum Marks | Marks Obtained |
|-----------|---------------|----------------|
| Section A | 25            |                |
| Section B | 35            |                |
| Section C | 20            |                |
| Total     | 80            |                |



**Section A (25 marks)**

Questions 1 to 5 carry 1 mark each. Questions 6 to 15 carry 2 marks each.  
For questions 1 to 15, four options are given. One of them is the correct answer.  
Make your choice (1, 2, 3 or 4). Shade the correct oval (1, 2, 3 or 4) on the Optical Answer Sheet (OAS) provided.

---

1. In 8371, the digit 3 is in the \_\_\_\_\_ place.

- (1) ones
- (2) tens
- (3) hundreds
- (4) thousands

2. Find the product of 7 and 8.

- (1) 1
- (2) 15
- (3) 54
- (4) 56

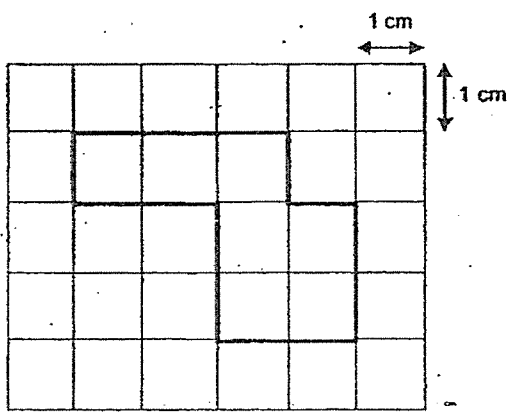
3. 3 km 5 m is the same as \_\_\_\_\_ m.

- (1) 35
- (2) 305
- (3) 3005
- (4) 3500

4. 105 cents is the same as \_\_\_\_\_.

- (1) \$1.05
- (2) \$1.50
- (3) \$10.50
- (4) \$105.00

5. The perimeter of the figure below is \_\_\_\_\_ cm.



- (1) 7
- (2) 8
- (3) 13
- (4) 14

6. 6 tens + 9 hundreds = \_\_\_\_\_

- (1) 69
- (2) 690
- (3) 906
- (4) 960

7. 300 more than 57 tens is \_\_\_\_\_.

(1) 243

(2) 270

(3) 357

(4) 870

8. Find the difference between 3600 and 184.

(1) 3416

(2) 3426

(3) 3516

(4) 3584

9. The sum of two numbers is 5211. The smaller number is 1979.  
Find the greater number.

(1) 3232

(2) 3332

(3) 4768

(4) 7190

10. What is the quotient when 525 is divided by 5?

(1) 15

(2) 105

(3) 125

(4) 150

11. How many threes are there in 233?

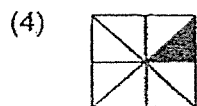
- (1) 1
- (2) 2
- (3) 76
- (4) 77

12. Dan has 4 boxes of balloons. There are 8 balloons in each box.

He uses 12 balloons for a party. How many balloons has he left?

- (1) 12
- (2) 20
- (3) 32
- (4) 44

13. Which of the following figures is not equivalent to  $\frac{1}{4}$ ?



14. A pizza was cut into 6 equal pieces. Alice ate  $\frac{2}{3}$  of the pizza and Carol ate  $\frac{1}{6}$  of it. What fraction of the pizza was eaten?

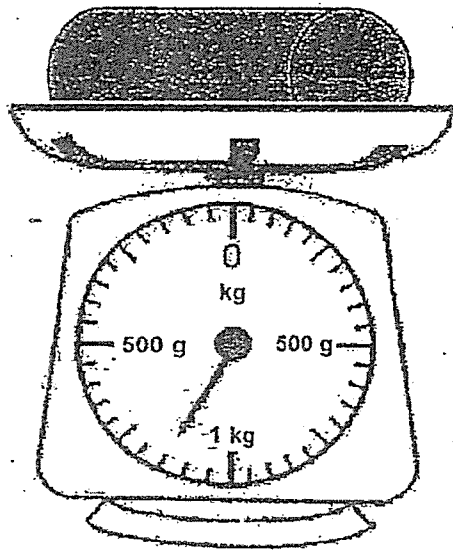
(1)  $\frac{1}{6}$

(2)  $\frac{5}{6}$

(3)  $\frac{3}{9}$

(4)  $\frac{5}{12}$

15. What is the mass of the object below?



(1) 1 kg 15 g

(2) 1 kg 30 g

(3) 1 kg 150 g

(4) 1 kg 300 g

**Section B (35 marks)**

Questions 16 to 20 carry 1 mark each. Questions 21 to 35 carry 2 marks each. Show your working clearly in the space below each question and write your answer in the answer boxes provided. Give your answers in the units stated.

Do not write  
in this space

16. Write four thousand and fifteen in numeral.

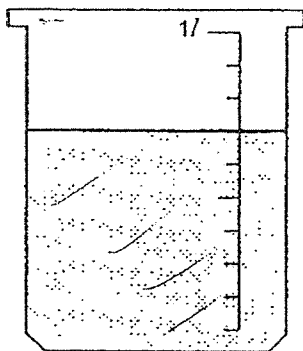
Answer: \_\_\_\_\_

17. What is the missing number?

7130, , 6730, 6530, 6330

Answer: \_\_\_\_\_

18. What is the volume of water in the beaker?



Answer: \_\_\_\_\_ ml

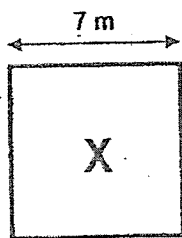


19. Find the sum of \$25.50 and \$7.

Do not write  
in this space

Answer: \$ \_\_\_\_\_

20. Find the area of square X.



Answer: \_\_\_\_\_ m<sup>2</sup>

21. Find the sum of 4316 and 2784.

Answer: \_\_\_\_\_

22. 54 less than 67 hundreds is \_\_\_\_\_

Do not write  
in this space

23. Find the value of (a) and (b).

|                     |   |   |     |    |     |    |
|---------------------|---|---|-----|----|-----|----|
| Number of tricycles | 1 | 2 | 5   | 7  | 8   | 10 |
| Number of wheels    | 3 | 6 | (a) | 21 | (b) | 30 |

Answer: (a)

(b)

24. Arrange the following fractions in order. Begin with the smallest.

$$\frac{3}{5}, \frac{4}{10}, \frac{1}{2}$$

Answer: \_\_\_\_\_, \_\_\_\_\_, \_\_\_\_\_  
smallest

25. What is the missing number in the box?

$$\frac{1}{2} = \frac{?}{6}$$

Answer: \_\_\_\_\_

Do not write  
in this space.

26. 2 boys cut a cake into 4 pieces. Eugene ate  $\frac{1}{4}$  of it. Michael ate  $\frac{1}{2}$  of it.  
How many pieces of the cake were left?

Answer: \_\_\_\_\_

27. 3 children shared a bar of chocolate. Edwin ate  $\frac{5}{12}$  of it, Rayner ate  $\frac{1}{4}$  of it  
and Vincent ate the rest. What fraction of the chocolate did Vincent eat?  
Leave your answer in the simplest form.

Answer: \_\_\_\_\_

28. (a) 4 m 50 cm = \_\_\_\_\_ cm

(b) 3 l 86 ml = \_\_\_\_\_ ml

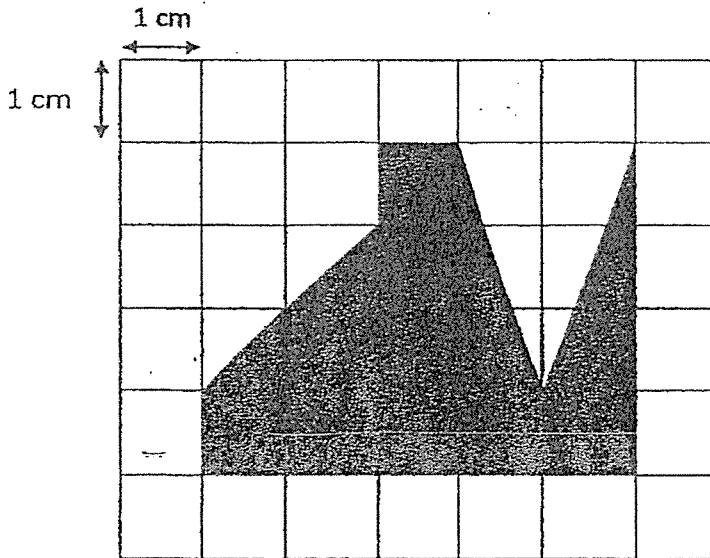
Do not write  
in this space

Answer: (a) \_\_\_\_\_

(b) \_\_\_\_\_



29. Find the area of Figure Y.



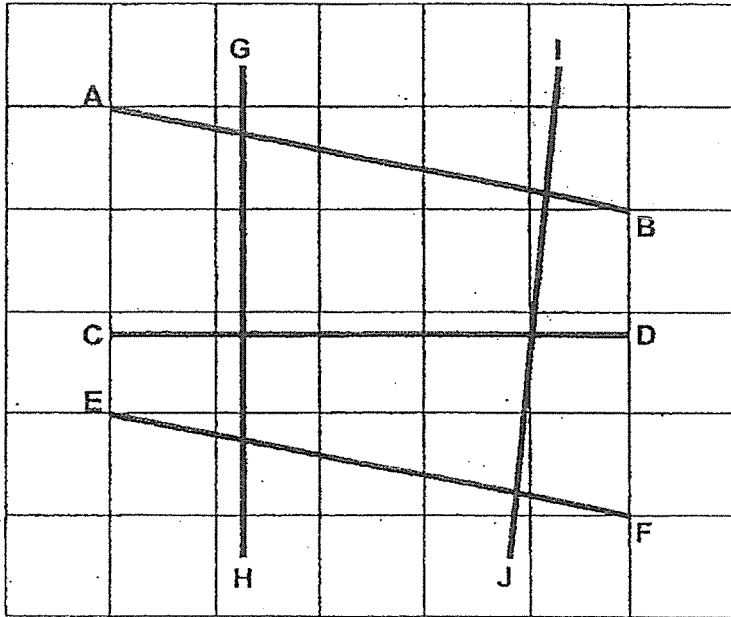
Answer: \_\_\_\_\_ cm<sup>2</sup>



30. Study the figure.

(a) Name a line parallel to AB.

(b) Name a line perpendicular to CD.

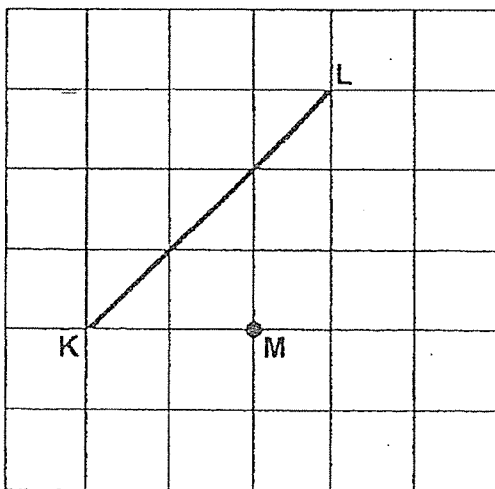


Answer: (a) \_\_\_\_\_

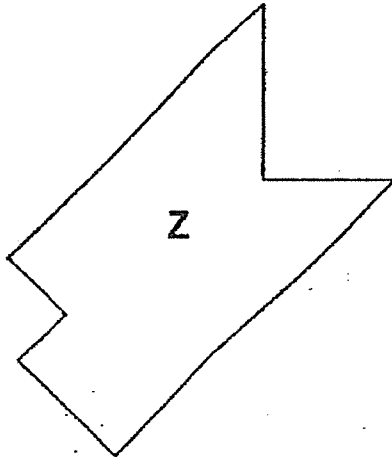
(b) \_\_\_\_\_

Do not write  
in this space

31. Draw a line parallel to KL that passes through point M.



32. Find the number of right angles in Figure Z.

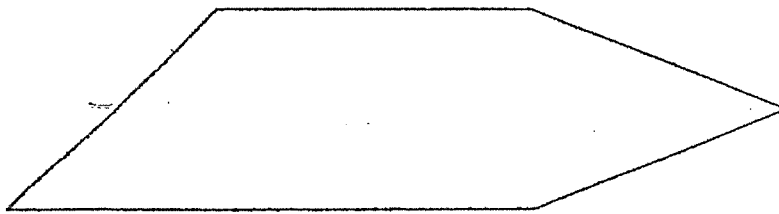


Answer: \_\_\_\_\_

Do not write  
in this space

33. In the figure below, find the number of:

- (a) acute angles
- (b) obtuse angles



Answer: (a) \_\_\_\_\_

(b) \_\_\_\_\_

34. The table below shows the number of beads collected by four children.

|       |       |
|-------|-------|
| Fiona | ● ● ● |
| Gina  | ● ●   |
| Haile | ● ● ● |
| Irene | ●     |

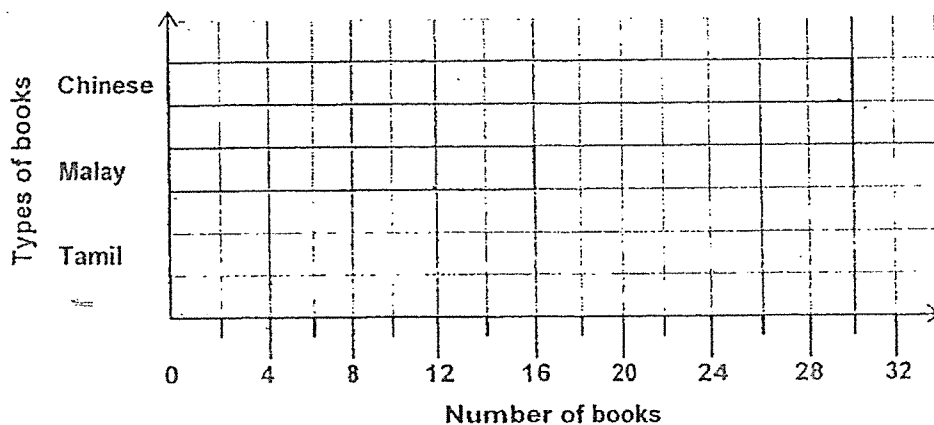
The children collected a total of 360 beads altogether.

How many beads does each ● stand for?

Answer: \_\_\_\_\_

Do not write  
in this space

35. The graph below shows the number of books read by children in a class.



The number of Chinese books read by the children was the same as the total number of Malay and Tamil books read by the children.

Draw the bar for the number of Tamil books the children read.

**Section C (20 marks)**

Do not write  
in this space

For questions 36 to 40, show your working and statements clearly in the space below each question and write your answers in the blanks provided. The marks for each question or part question are given in the brackets. Show your units clearly.

---

36. At a school carnival, Nigel sold 1843 cookies.

He sold 379 cookies fewer than Pauline.

(a) How many cookies did Pauline sell?

(b) How many cookies did they sell altogether?

Answer: (a) \_\_\_\_\_ [2]

(b) \_\_\_\_\_ [2]



37. The school bookshop gives away 2 erasers for every 8 pencils bought.  
Mateen bought 96 pencils. How many erasers did he get?

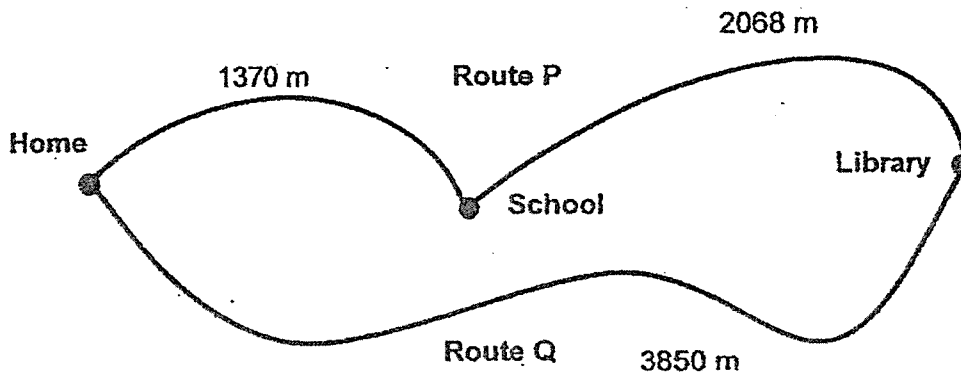
Do not write  
in this space

Answer: \_\_\_\_\_ [4]

38. Faizah is at home. She wants to go to the library.

(a) What is the distance Faizah needs to travel if she chooses Route P?

(b) What is the difference in distance between Route P and Route Q?



Do not write  
in this space

Answer: (a) \_\_\_\_\_ [2]

(b) \_\_\_\_\_ [2]

39. Raja works at a hawker stall in a market. His earnings per day are shown in the table below. How much does he earn from Monday to Friday?

|                    | Earning per day |
|--------------------|-----------------|
| Monday to Thursday | \$167           |
| Friday to Sunday   | \$235           |

Do not write  
in this space

Answer: \_\_\_\_\_ [4]

40. The length of a field is 2 times its breadth.  
The perimeter of the field is 108 m.  
What is the length of the field?

Do not write  
in this space

Answer: \_\_\_\_\_ [4]

End of Paper



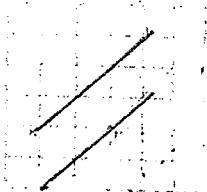
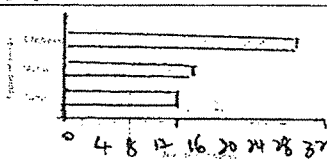


## ANSWER KEY

**LEVEL** : Primary 3  
**SCHOOL** : Rosyth School  
**SUBJECT** : MATHEMATICS  
**TERM** : SA2

### SA2

|     |   |     |   |     |   |     |   |     |   |
|-----|---|-----|---|-----|---|-----|---|-----|---|
| Q1  | 3 | Q2  | 4 | Q3  | 3 | Q4  | 1 | Q5  | 4 |
| Q6  | 4 | Q7  | 3 | Q8  | 1 | Q9  | 1 | Q10 | 2 |
| Q11 | 4 | Q12 | 2 | Q13 | 4 | Q14 | 2 | Q15 | 3 |

|     |   |     |  |
|-----|---|-----|--|
| Q16 | 4015                                      | Q17 | 6930   |
| Q18 | 700 ml                                    | Q19 | \$32.50  |
| Q20 | 49m <sup>2</sup>                          | Q21 | 7100   |
| Q22 | 6646                                      | Q23 | (a) 15<br>(b) 24   |
| Q24 | $\frac{4}{10}, \frac{1}{2}, \frac{3}{5}$  | Q25 | 3  |
| Q26 | 1 piece of cake                           | Q27 | $\frac{1}{3}$  |
| Q28 | (a) 450cm<br>(b) 3086 ml                  | Q29 | 13cm <sup>2</sup>  |
| Q30 | (a) EF<br>(b) GH                          | Q31 |   |
| Q32 | 3   | Q33 | (a) 2<br>(b) 3   |
| Q34 | 40  | Q35 |  |
| Q36 | (a) 1843+379=2222<br>(b) 2222+1843=4065   | Q37 | 96 ÷ 8 = 12<br>12 × 2 = 24   |
| Q38 | (a) 1370+2068=3438m<br>(b) 3850-3438=412m | Q39 | 167 × 4 = 668<br>668 + 235 = 903   |
| Q40 | 108 ÷ 6 = 18<br>18 + 18 = 36              |     |  |